

# Seasonal Safety Reminders



### Preparing for a tornado

A tornado is a column of rotating wind, travelling across the land at speeds of 30 to more than 100 kilometres per hour (20 to 65 m.p.h.). Tornadoes can occur at any time. Most often they occur in late afternoon, in late spring or early summer. They are most frequent during moderate summer temperatures, accompanied by high relative humidity.

A severe thunderstorm or tornado **watch** is issued if conditions exist for tornadoes to develop. No tornado has been sighted. A tornado **warning** is issued if one has been sighted, or if radar detects a tornado-like disturbance.

### Responding to a tornado warning

- If you are in the open, seek shelter in a sturdy building. If none is available, be prepared to lie flat in a depression or ditch, and hang onto something on the ground...a culvert, large rock, shrub, etc.
- If you are in an automobile, leave your vehicle and seek shelter described above. You are safer in a ditch than in your car.
- If you are in a public facility (e.g., school, work, mall), go to an interior hallway on the lowest level. Avoid large rooms and stay away from windows. Determine who is in charge of the facility and follow their instructions. Your calm, orderly behaviour will set an example for others and help avert panic.
- If you are at home, head for the basement. Seek shelter under a staircase or sturdy furniture. If you have no basement, go to a bathroom or closet on the lowest floor, or seek shelter under sturdy furniture.
- If you are in a mobile home, go immediately to a more substantial shelter.

### What you should do:

- Find your emergency radio and tune it to a local station.
- Assemble all people and pets at the agreed-upon meeting place in the home.
- When a tornado **watch** is issued, store or secure light items outside, e.g., garbage cans, bikes, boats, barbeques, etc.
- When a tornado **warning** is issued, seek shelter. Identify the safest location in your home and ensure everyone knows where to go.
- Take the radio and batteries with you. Do not leave this safe shelter until the radio has issued the “All Clear”.

## Safety Tip Tommy

Remember a bicycle is a vehicle. Bicyclists share a complex traffic environment with other larger forms of transportation. We can make bicycling safer for all by observing the following safety tips:

- Always wear a helmet
- Obey all traffic signs
- Ride your bicycle near the right-hand edge of the road
- Never carry another person on your bicycle
- Always use hand signals when turning or stopping
- Watch for cars at cross streets, driveways, and parking places
- Be careful when checking traffic and don't swerve when looking over your shoulder
- Give pedestrians the right-of-way
- Keep your bicycle in good condition
- Always ride carefully



***Helmets are cool! - Wear your Helmet!***

# CAER Community Report

Spring/Summer 2004

***Community Response Emergency Preparedness  
for the communities of Sarnia-Lambton***

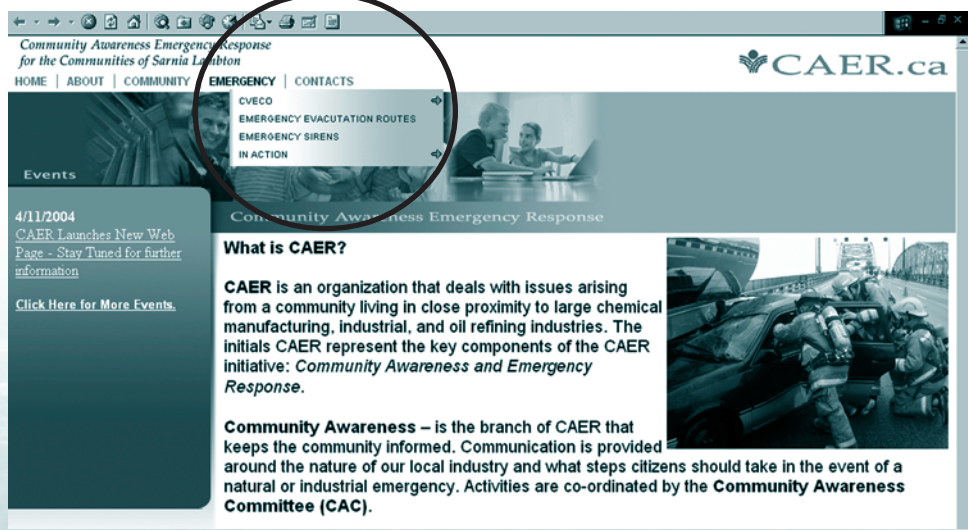
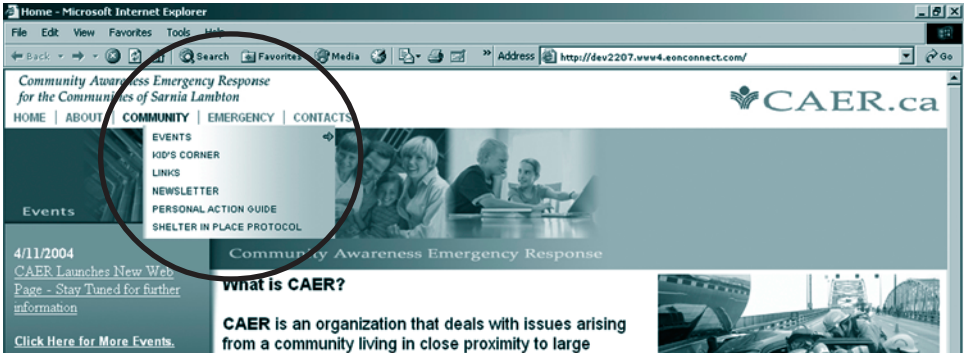
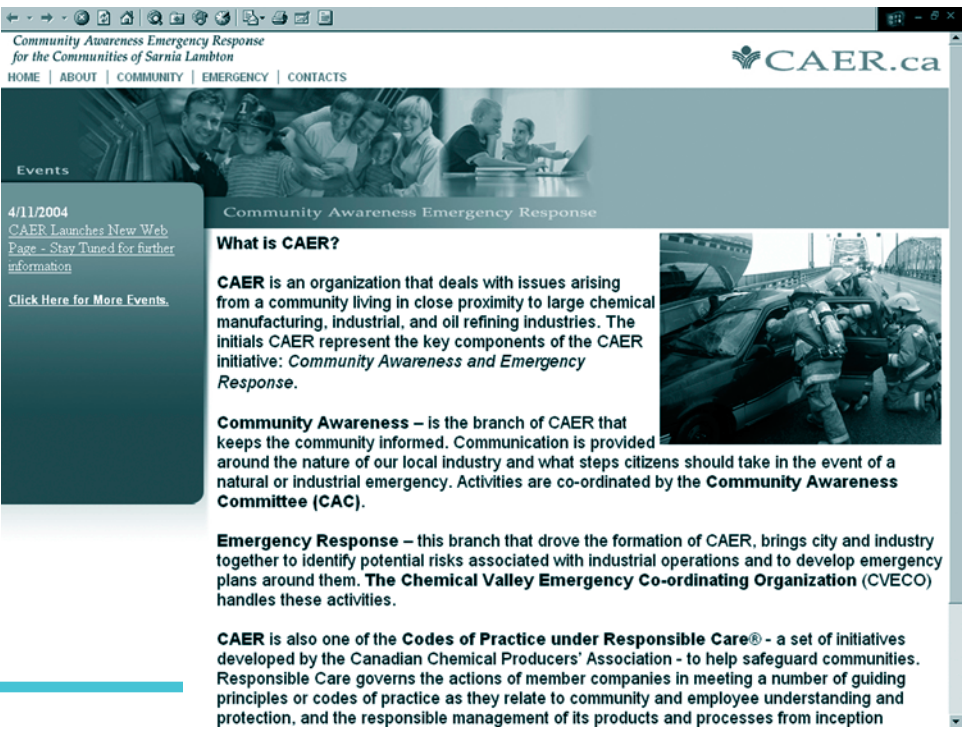


**Community Awareness Emergency Response**



Welcome to the Spring/Summer 2004 **CAER Community Report**. The focus of this newsletter is dedicated to the launch of our redesigned website. [www.caer.ca](http://www.caer.ca) The look of this new website reflects the strong partnership between industry and the community.

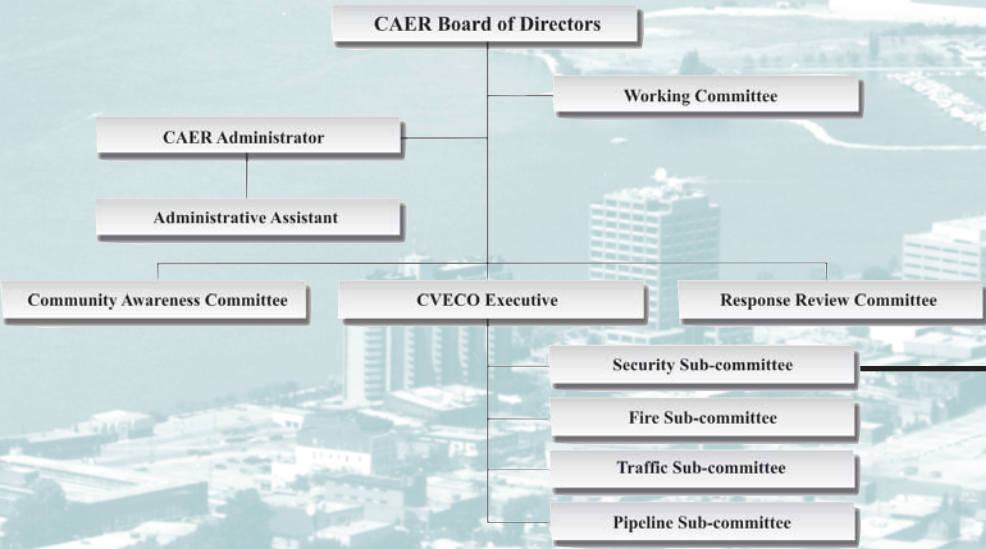
Sarnia-Lambton CAER is an organization that addresses the concerns of a community that thrives in close proximity to an active petrochemical and chemical processing industrial area. The new website, CAER.ca, is a vehicle for educating and creating awareness around issues of public safety. The website sports a fresh new look and offers a simplified system for navigation. Drop down menus provide an at-a-glance preview of what is contained within each of the menu areas.



## Understanding How CAER Works

To help understand how CAER is working for you in the community, each issue of the Community Report will be profiling a different committee within the CAER organization.

Structure of the CAER Organization



### Security Sub-committee

Following the tragic events of September 11, 2001 industries met to review security measures at their sites. As a result of their meetings they agreed to enhance and promote security awareness, share site information and resources, in a concerted effort to better safe-guard our industries and community. From this initiative the *Site Watch* program was born. Site Watch is a loss prevention program that established a working partnership of the Sarnia Police Service, local OPP detachments, and industry

The security committee acts as the steering committee for the Site Watch program and will continue to foster the growth and development of this important security association.